

**pärnumaa**  
Pärnu County

**Geography and nature**

The area of Pärnu County, the largest among 15 counties of Estonia, is **4,807 km<sup>2</sup>**.  
The county makes up 11% of the Estonian territory (45,227 km<sup>2</sup>).  
The territory of the county consist of:

Forests	54%
Swamps and bogs	24%
Arable land	19%
Other land	7%

A pie chart showing the land use distribution: Forests (54%), Swamps and bogs (24%), Arable land (19%), and Other land (7%).

**pärnumaa**  
Pärnu County

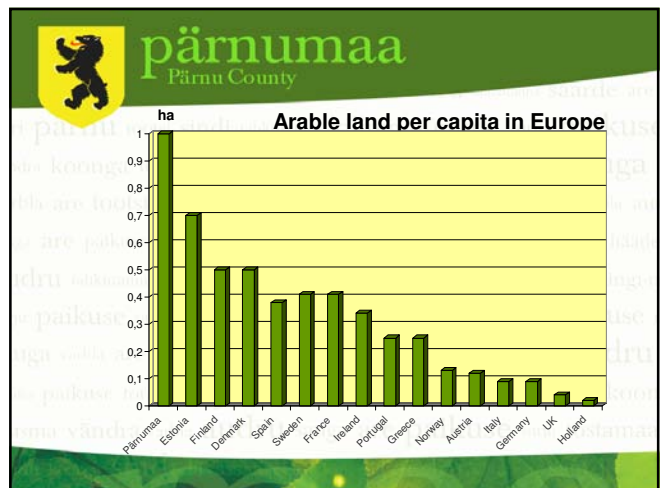
The relief of the county is flat: highest point near the Latvian border is **81 m** above the sea level. Ermistu, the largest **lake** of the county (4.8 km<sup>2</sup>) near Tõstamaa is famous its curative mud.

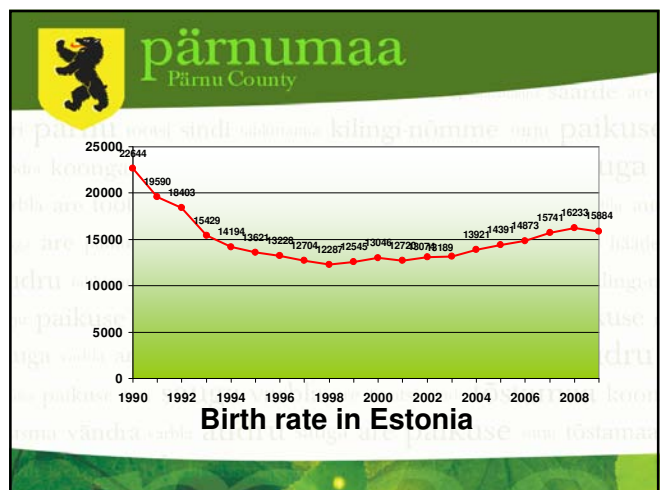
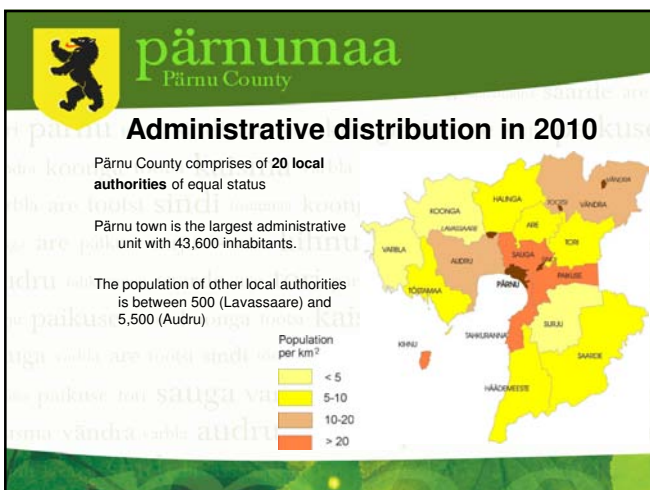
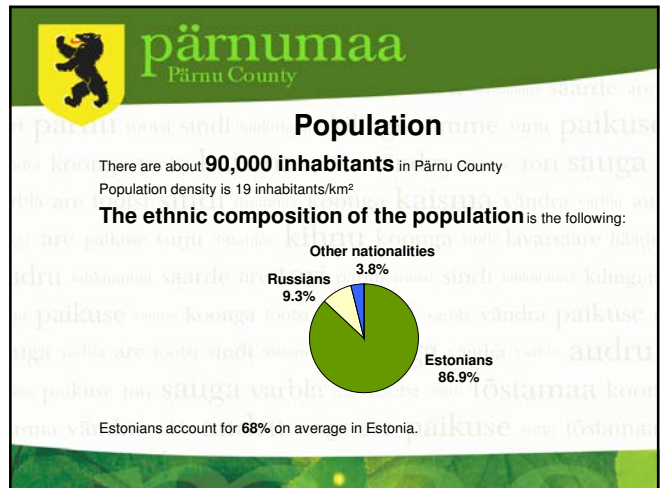
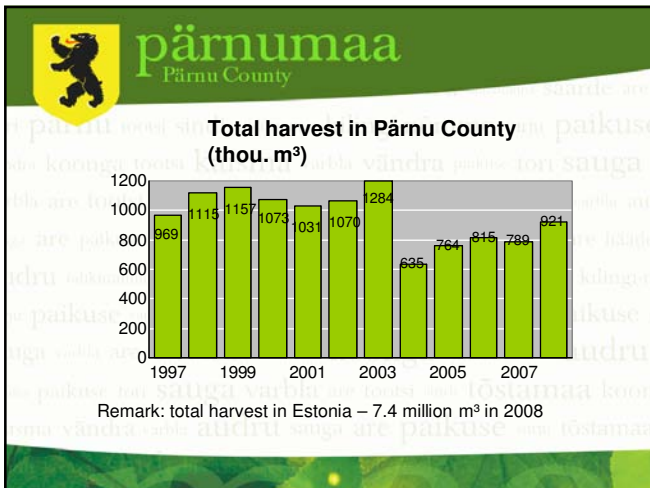
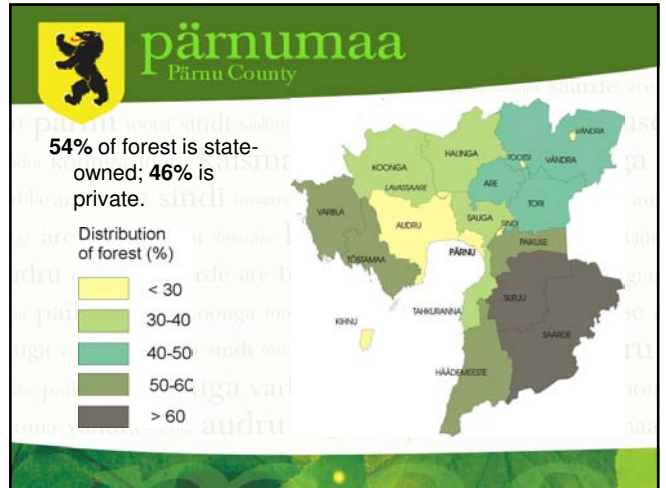
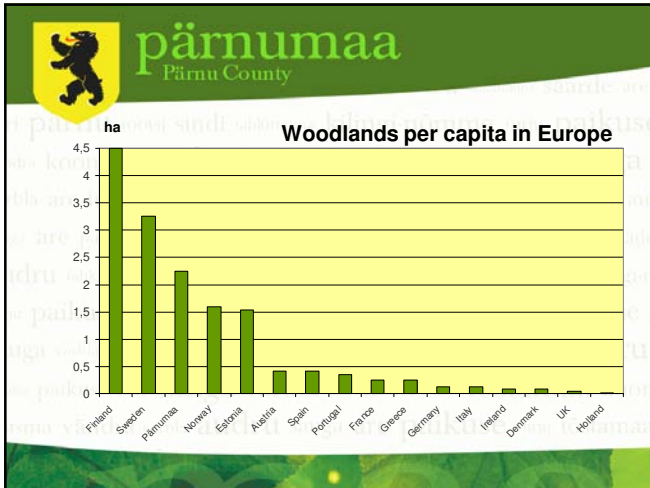
There are **177 islands and islets**, two of them are inhabited.

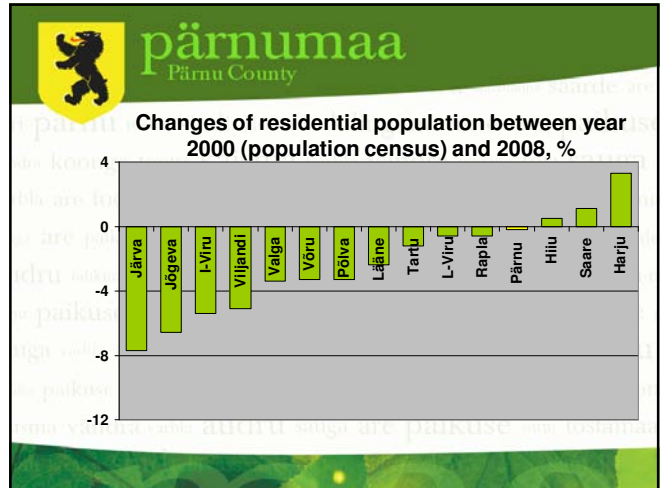
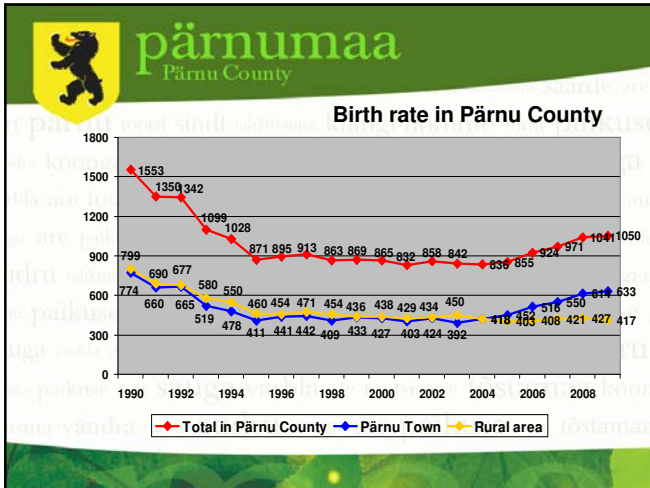
**Kihnu** is the largest island (17 km<sup>2</sup>, 600 inhabitants).  
The coastline is over 242 km long.

The **Pärnu River** that runs through the county and flows into the sea in Pärnu, is longest one in Estonia.

An aerial view of the Pärnu River flowing through a green landscape towards the sea.







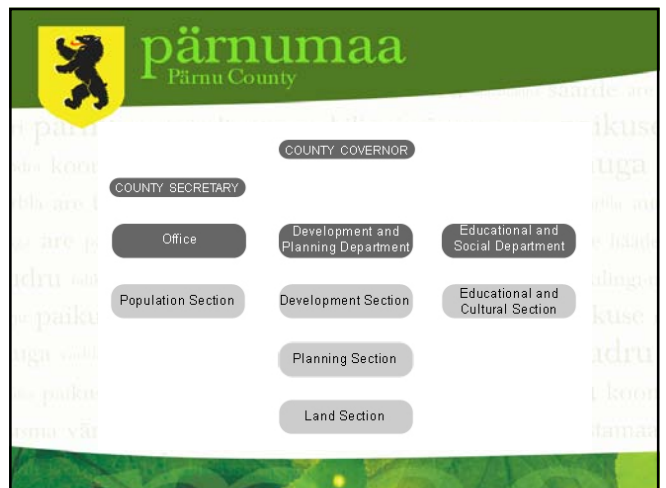
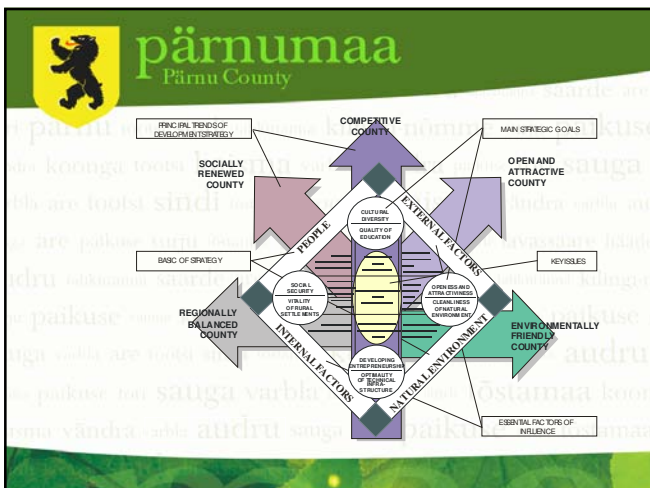
From...	To Pärnu county	From....	To Pärnu county
Viljandi county	+484	Valga county	+115
Rapla county	+268	Jõgeva county	+109
Järva county	+247	Põlva county	+90
Lääne County	+215	Võru county	+66
Lääne-Viru county	+165	Hiiu county	+37
Ida-Viru county	+147	Tartu county	+19
Saare county	+122	To Harju county	-2240
		Total net migration	-159

**Our development strategy for the future**

The most general goal of our development strategy aims at raising the living standard in Pärnu County. According to our vision of the future, **Pärnu County is the best place for living, working and holidaymaking in Estonia.**

According to our main strategic objectives, Pärnu County will be:

- internationally competitive;
- socially recreated;
- green and environmentally friendly;
- co-operation-minded county with balanced development.



**pärnumaa**  
Pärnu County

### Twinning partnership

Region	Buskerud	Västmanland	Ostrobothnia Pohjanmaa / Osterbotten	Cuxhaven
Country	Norway	Sweden	Finland	Germany
Area	10 456 km <sup>2</sup>	6 302 km <sup>2</sup>	7 932 km <sup>2</sup>	2 073 km <sup>2</sup>
Population	253 000	257 000	175 000	204 000
Admin. centre (population)	Drammen (63 000)	Västerås (107 000)	Vaasa / Vasa (59 000)	Cuxhaven (52 000)
Location				

**pärnumaa**  
Pärnu County

### Nordic Council of Ministers infopoint in Pärnu – since 2002



Nordic Council of Ministers


### Europe Direct Pärnumaa infopoint – since 2005



**pärnumaa**  
Pärnu County

Pärnu County is an area of **active multifunctional economy**

- Agriculture
- Forestry and woodworking industry
- Peat industry
- Production of building materials
- Fishing and fish processing
- Tourism and recreation economy
- Catering
- Commerce, service
- Rehabilitation
- Textile industry
- Electronics



**pärnumaa**  
Pärnu County

### Rank of states in foreign ownership companies (01.01.2010)

Rank	State	Number of companies
1.	Finland	177
2.	Sweden	64
3.	Latvia	55
4.	United Kingdom	44
5.	Germany	31
6.	USA	30
7.	Russia	27
8.	Norway	15
9.	The Netherlands	11
10.	Denmark	10
	Total	410


**pärnumaa**  
Pärnu County

**The Via Baltica Highway (E67)**, the most important highway of the Baltic countries runs through the county for about 90km.

**Railways** - 95 km of Tallinn-Riga railway its 4 stations and 8 stops within the county goes through Pärnu county

**Airports** - Pärnu airport (EPU) has a certificate of international flights. There is an airfield in Kihnu Island.

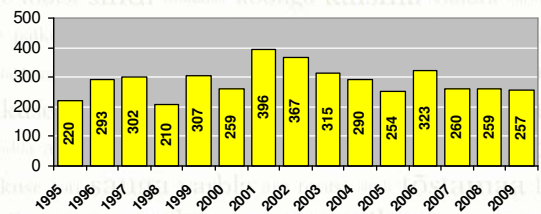
**Ports** - The Port of Pärnu is the main sea gateway for South Estonia. The yacht harbour was the first one in Eastern Europe to receive the Blue Flag.




**pärnumaa**  
Pärnu County

### Tourism

Estimated average number of visitors of Pärnu town during summer-season (thousands)





Year	Estimated average number of visitors (thousands)
1995	220
1996	293
1997	302
1998	210
1999	307
2000	259
2001	396
2002	367
2003	315
2004	290
2005	254
2006	323
2007	260
2008	259
2009	257

 **pärnumaa**  
Pärnu County

The network of schools is well established and basically meets the needs of the county.


- **University of Tartu Pärnu College** where one can get higher education in the fields of business administration, tourism and hotel management, social work administration and fishery and management of water bodies.
- Institute of higher education of **Mainor Pärnu branch** where one can get higher education in the field of info technology, business management, psychology.



 **pärnumaa**  
Pärnu County

Other institutions offering higher and vocational education are as follows:

- **Pärnu Vocational Education Centre** where one can train for becoming:
  - a carpenter, joiner, brick-layer, builder, driver, car mechanic, shop assistant or cook
  - specialist on social welfare and domestic economy
  - specialist on agriculture, forestry and other skills
- The **Marine Centre of Pärnu** offers a chance to become a sailor, boatman, ship motorist or skipper-motorist
- The **Police School of the Police College of the Public Service Academy** in Paikuse prepares junior and senior police officials who get vocational secondary education
- **German Technology School of Pärnu** where one can get vocational secondary education in the fields of info technology, computer network, bookkeeping, real estate management and team management

 **pärnumaa**  
Pärnu County

**Thank you for your attention!**

